

# explore asheville's river arts district

## River Arts District Studio Stroll

Saturday & Sunday, June 12-13, 2010

**T**wice a year, every second weekend in June and November, Asheville's River Arts District artists open their studios to the public for two days of festivities known as the Studio Stroll. The next Studio Stroll will be held November 13-14, 2010.

The River Arts District Studio Stroll, begun in 1994, is the biggest and easiest to navigate tour of working artist studios in the region. More than 120 studios are open, including painting, pottery, glass, photography, drawing, jewelry, quilts, encaustic, ironwork, sculpture, clothing, book arts, weaving, woodworking and more!

Explore studios inside the revitalized old factories and warehouses along the French Broad River, just minutes from downtown. Local artist/entrepreneurs welcome everyone into their studios to learn more about their process and their art.

Open from 10 a.m. to 6 p.m. both Saturday and Sunday! Ride free on the Asheville Historic Trolley between studio buildings. Board at the Asheville Visitor Center on Montford Ave. or hop on anywhere along the route.

**IF YOU GO:** An information booth will be located at the five-way stop where Clingman Ave. meets Lyman St. For more details visit [www.riverartsdistrict.com](http://www.riverartsdistrict.com) or call (828) 280-7709.

### RIVER ARTS STUDIO BUILDINGS

- \* 240 Clingman
- \* 347 Depot
- \* Cotton Mill Studios
- \* CURVE studios
- \* Fine Arts League
- \* Odyssey Center
- \* Phil Mechanic
- \* Riverside Studios
- \* Riverview Station
- \* Roberts St. Studios
- \* Roots
- \* Studio 375
- \* The Wedge
- \* Warehouse Studios



John Mac Kah



Studio Stroll photos by Laurie McCarriar.

## ROOTS CAFÉ AND STUDIOS

Roots Café is the new destination in the River Arts District for fast, fresh and delicious organic food and coffee. Breakfast and lunch menus are unique and imaginative. The expanded outdoor patio is perfect for a leisurely lunch in a day of studio and gallery hopping. The café will be open from 10 to 5 both days of the Studio Stroll. Current regular hours are 7 to 3 weekdays, and new summer hours will be announced soon.

Upstairs in the light-filled studios, Barbara Frohmader of Abbi's Brush fills her studio with color and excitement in her oil paintings; at Silverpoem Studio, Lynn Stanley creates dramatic Asian brush paintings with Chinese ink and watercolor on rice paper; and Molly Rose Freeman's drawings delight the eye and



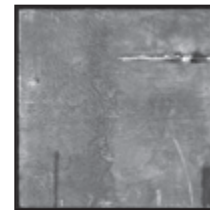
engage the imagination with intricate patterns and intense color. You will also find portraiture and fine art photography displayed.

The Roots building is at 166 W. Haywood St., tucked away behind Riverside Studios on the corner of W. Haywood and Riverside Dr., just up Riverside from 12 Bones and around the corner from the Cotton Mill Studios.

Visit [www.rootsfood.com](http://www.rootsfood.com), or call (828) 232-2828 for more information.

14

## CONSTANCE WILLIAMS GALLERY

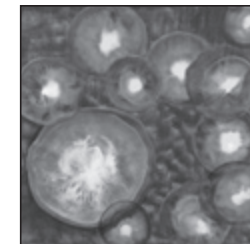


Visitors have a unique visual and tactile experience in Constance William's large working encaustic studio and gallery, which features

her engaging landscapes and abstracts, as well as ceramics, sculptures, paintings, jewelry, furniture and metal works by several notable local artisans whose creative intentions complement the spirit of her paintings. Constance has set up her gallery space to be an enjoyable, explore-around-the-corners type of adventure for art lovers. Even when she is away from the studio – which is rarely – her open working space provides an educational and aesthetic look at work in progress and what it takes to paint encaustics.

Constance continually explores technique and color in this ancient Greek process. Upon cradled birch and clay-coated boards she applies pure beeswax, damar tree resin and wax paint colors in dozens and dozens of luminous layers. Use of a hand-held blow torch keeps the surface heated and fluid so that she can add and subtract layers of color and apply surface techniques. She also uses liquid washes, stains and three-dimensional materials in her work.

Constance is also a clay sculptor.



A trek upstairs in this historic building reveals her clay studio, as well as the studios of companions Jenny Mastin, Cassie Ryalls, Fran Welch and Greg Vineyard. Their work is downstairs in the gallery along with local artists Lucile Stephens, Patty Bilbro, Mystery Masiello, Kelly Prestwood and Cynthia Wynn. Additionally, Constance is featuring guest artist Phil De Angelo for an extended period.

Ever-involved in community service, Constance Williams is the current President of the River Arts District Artists, a 130+ member strong group in over a dozen historic buildings. Just down the hill from Patton Ave., the District is abuzz with not only a stunning breadth and

depth of amazing art, but also with planning and coordinating all their marketing, promotions and events so that the public has a great time when they visit. More and more studios are open more and more often, with several open seven days a week! One can find food, art and friendly

artists every day in the District, and Constance is proud to be a part of that.

Open every day from 11 to 4, and often later, Constance Williams Gallery is located at 9 Riverside Drive, in CURVE studios and garden, across from 12 Bones Smokehouse.

[www.constancewilliams.net](http://www.constancewilliams.net)  
(828) 333-3286

16



## GREG VINEYARD

Greg Vineyard is an artist, creative consultant, and writer in Asheville's River Arts District who

trusts that all artistic expression has a purpose. His colorful, tactile and out-of-round meditation/tea bowls, carved keepsake boxes and animal/word tile assemblages are about contemplation,

connectivity and communication in a spiritual procession of awareness, service, esteem, healing, humility, peace, joy, serenity, light and love.

His studio and his work can be found at Constance Williams Gallery, 9 Riverside Drive, in CURVE studios and garden, across from 12 Bones. Open every day 11 a.m. to 4 p.m. Visit [www.CURVEstudiosNC.com](http://www.CURVEstudiosNC.com)

16



Asheville's Historic RIVER ARTS DISTRICT

# STUDIO STROLL

Saturday & Sunday

**JUNE 12-13**

**10am-6pm**



## Jonas Paints LIVE!

Sat - June 12 & Sun - June 13

**2pm**

*HEAR THE COLORS - SEE THE SOUNDS*

**THE  
RIVER  
GUERGUERIAN  
PROJECT**



[www.ShareTheDrum.com](http://www.ShareTheDrum.com)

**JONAS GERARD** FINE ART

240 Clingman Ave. 828.350.7711 [www.jonasgerard.com](http://www.jonasgerard.com)

CERAMICS FOR  
CONTEMPLATION,  
COMMUNICATION  
& CONNECTIVITY



**GREG VINEYARD**

828 707 1641

[vineyardcreative.byregion.net](http://vineyardcreative.byregion.net)

[CURVEstudiosNC.com](http://CURVEstudiosNC.com)



RIVER ARTS DISTRICT:  
**Constance Williams Gallery**

9 Riverside Dr., Asheville, NC 28801

in CURVE studios & garden, across from 12 Bones

**OPEN SEVEN DAYS A WEEK 11 - 4**

**Studio Stroll: June 12-13, 10 - 6**

**r  
o  
o  
t  
s**

**café and  
studios**

166 W. Haywood St.



**Roots Studios**

Oils ~ Sumi-e ~ Drawing

Portraits ~ Photography

**Stroll**

**Hours:**

Sat & Sun

10 to 6

**Sumi-e**

**Demos:**

11 and 3

**Roots  
Café**

seasonal and  
sustainable  
foods

organic  
gourmet  
fast  
affordable



**Cafe Hours  
for the Stroll**

Saturday ~ Sunday

10 am to 5 pm



**JANTONART.COM**

PORTRAITS AND PAINTINGS BY  
STEPHEN JANTON



RIVERVIEW STATION #211  
191 LYMAN ST. ASHEVILLE, NC  
305-588-4564



# studio stroll

## JONAS GERARD FINE ART

Spring is here and June's next door. I get a boost of creative energy during these times. The thing about spontaneous painting is that it allows the aliveness, energy and vulnerability of the work to be felt by the viewer and the pulse of transformation has begun. The heart is caught open by surprise and bliss occurs.

That aliveness permeates the atmosphere in the gallery. Art is alive. Therapists on occasion bring their clients in for inspiration and healing. Also many art classes come to partake of the creative juices served daily.

In my continuous search to find new outer forms to express that spontaneous process I became a student next door at the Odyssey Center under the guidance of Alex Irvine. The self discovery began all over again – I was like a child playing with the clay, using all my fingers and every part of my hand. It was a fabulous experience. After

the firing of the clay I chose to paint the newly found art form, instead of glazing it. I rediscovered a new presence of expression and vulnerability that was fresh and intoxicating.

Again looking for new ways to go deeper into this mystery of discovery, I revisited doing small paintings from 4x4 inch to about 8x10. Painting them fast allows the mind to be quiet and by-pass any mental judgments. The results are little gems, one after the other.

After going so small I'm now exploding onto a large metal surface, painting a car. Starting with my van, I find the shape and undulating form of the car's body to be very exciting which opens up a new approach of expression because the medium is so different. Thus, art on cars is born. It's a fascinating new journey.

People who come to see what this spontaneous action looks like are mesmerized, as I am every time it happens, by its simplicity and appealing daringness.



During the Studio Stroll I will put my creativity on the line on Saturday and Sunday, June 12 and 13 at 2 p.m. This time I will paint to the improvisational music of the River Guerrierian Project band, an outstanding group of very talented improvisational musicians. You can experience the magic of hearing the colors and seeing the music as if the music and the painting were having a conversation.

Come and enjoy watching the spontaneous process of making art in the studio of my gallery, and now on the van, at 240 Clingman Ave. in the heart of the River Arts District.

4



Located in Riverview Station

191 Lyman St. #222  
Asheville, NC

(828) 713-5190



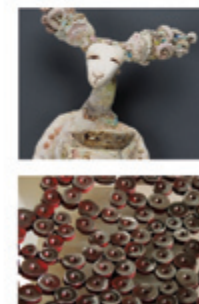
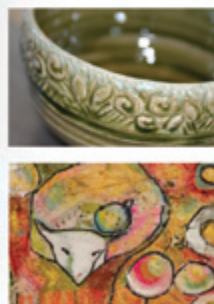
thelaughingmermaid.com

## CONSTANCE WILLIAMS GALLERY

River Arts District  
Studio Stroll  
June 12 - 13, 10A - 6P



paintings, functional clay, decorative ceramics  
jewelry, metal works, steel furniture



River Arts District, 9 Riverside Drive, Asheville, NC, In CURVE studios & garden, across from 12 Bones Smokehouse  
OPEN EVERY DAY 11 - 4 WWW.CONSTANCEWILLIAMS.NET 828 333 3286



# studio stroll

## The Art of Community

### MUSING ON WHAT IT TAKES TO BE (IN) ONE

BY GREG VINEYARD



Photo: Greg Vineyard

According to The American Heritage College Dictionary, “community” means: “A group of people having common interests.” The term is also used to reference where said group hangs out. The word’s Latin roots are obvious (“communis”), but it also relates to the warm-fuzzy concept of “fellowship.”

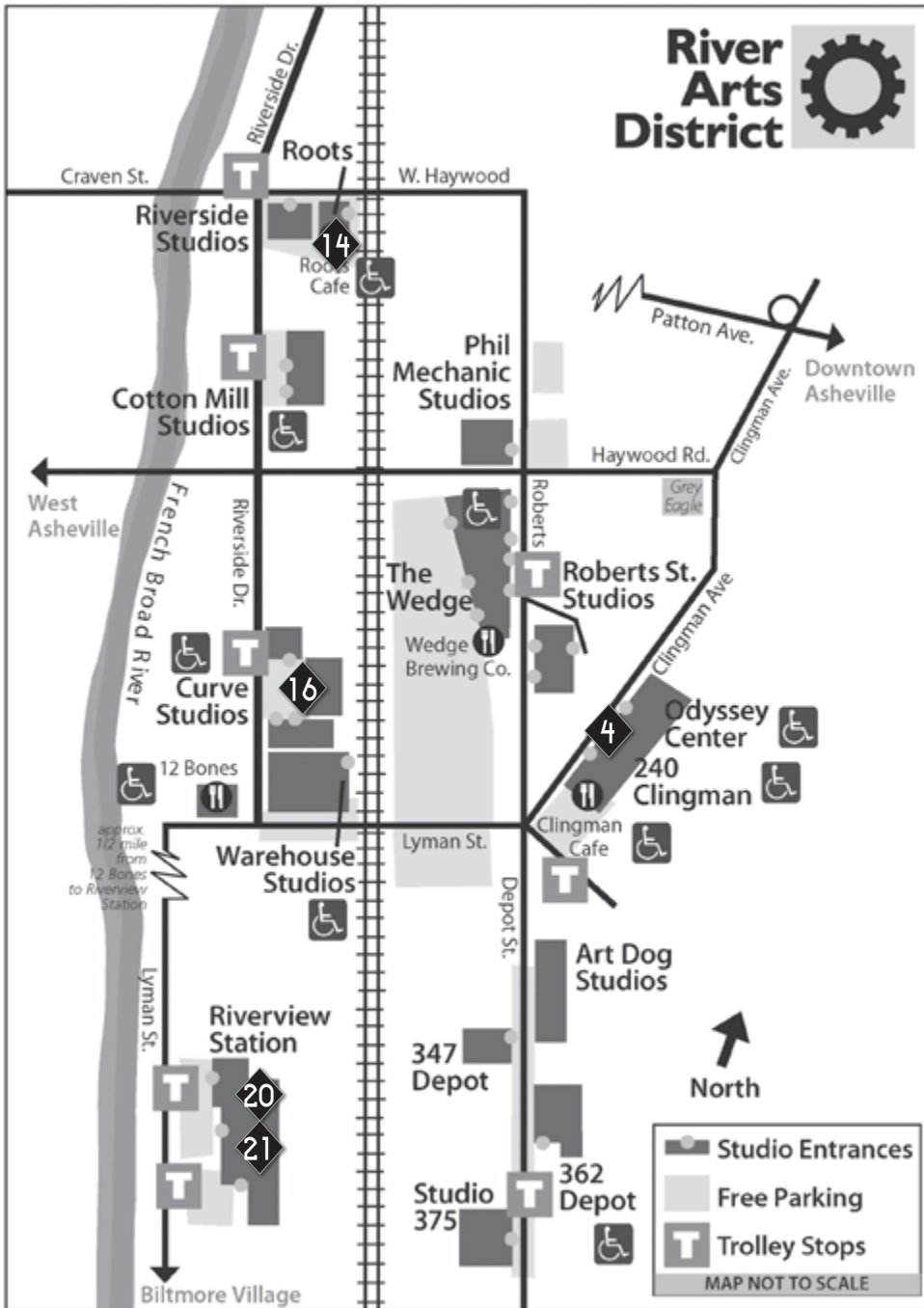
In May’s column (where the photo of me with a bag over my head was rated “model-worthy” by my friends – uh, thanks?), I suggested that joining an art group was beneficial. As a fairly recent transplant to the area, getting on the River Arts District’s roster was a good way to bridge the gap from broad categories (“Artist”) to specific ones (“River Arts District Artist”), thus providing me the opportunity to self-define, as well as allowing others to know who I am, what I do and where to find me.

But there is more to the art of community than just being on a list. I soon observed that I had joined a group that marches steadily forward with activities such as producing a yearly brochure and hosting events and shows. Plus putting on the twice-annual gargantuan Studio Stroll, where some lead, some follow and all toil -- it takes a village to pull all that together, so everyone pitches in and the result is 120+ artists letting the public into their studio and gallery environments at the same time. The extra energy is palpable, people love it and they show up in droves. The artists make it look easy as pie, but I can tell you that it’s a highly-logistical affair.

What makes a community like this tick? After creativity, the breadth and depth of

‘Community’ continued on page 28

## River Arts District



Trolley stops during Studio Stroll weekends only

## THE LAUGHING MERMAID SOAP COMPANY

21

I can make you feel good all over! My name is Mary Novak and I own The Laughing Mermaid Soap Company, currently located in Riverview Station. I have created a unique line of soaps, lotions and perfumes that are a fusion of “Funky” Asheville and “Sizzling” South Beach. You’ll just have to experience it for yourself!

The mission of The Laughing Mermaid Soap Company is to make you feel good all over. It is our pleasure to bring you pleasure. Through the artful combination of decadent oils, exotic butters, vibrant colors and splashy

scents we have created some of the most original and outrageous soaps, lotions and perfumes Asheville has ever seen.

I have been handcrafting soap for more than 11 years. I started my business in South Florida and took a two-year hiatus while preparing to move to Western North Carolina.

I realized that I really missed soap making and decided to start a business here in Asheville. As much as I love the coolness and funkiness of Asheville I still miss the ocean. I wanted to somehow incorporate these two elements into my business, hence, The Laughing Mermaid.

Visit my website to place orders and view my line of products, [www.thelaughingmermaid.com](http://www.thelaughingmermaid.com). Or call (828) 713-5190 for more information.



## JANTON ART STUDIO

American born Stephen R. Janton (b.1959) states, “I am a realist painter who enjoys the challenge of painting the human form. I have been so influenced and impressed by the Old Masters, the Dutch “Little Masters” and the best of the French academic painters of the nineteenth century. They carried oil painting to its highest pinnacle of technical perfection.”

In addition, having grown up in Wilmington Delaware, Janton was exposed to the Brandywine School and the artists Pyle, the entire Wyeth family and his friend and guide George Weymouth. Portraiture and the human form have always been Janton’s main interest and he has developed a good sense of form during his many years studying and working as a Physical Therapist. His works in still life and landscapes tend to be more experimental with a sense of realism.

“I attempt painting what is real to me... what I see. In doing a portrait, I enjoy finding the composition that best describes the individual’s personality and I include the person being painted in that process which makes for a more successful outcome. I frequently utilize the technique of a single light source in my portraits as it helps create greater



King Penguins, 18" x 24" Oil on gesso panel by Stephen Janton

depth. I rely primarily on the techniques of traditional oil painting but have tested my deepest level of patience by painting in egg tempera and appreciate the quality of skin tones created by the unique process.”

“Artwork should stand on its own merits — or fail on its own shortcomings if it does not succeed in registering favorably upon the viewer’s sensibilities. Quality is the central issue, as it must be where art is concerned. I am doing my best and enjoying the process in my attempts at creating quality in my artwork.”

Janton Art Studio  
Riverview Station, 191 Lyman St.,  
Studio #211, Asheville, NC 28801  
[www.jantonart.com](http://www.jantonart.com)

20